

Description

Mitsubishi MUT-3 Lite diagnostic tool



Advantage:

1. Never lock machine;
2. Free upgrade;
3. Free technical support;
4. **Support Gasoline vehicles (car) and Diesel vehicles (truck ,bus)**

OS requirement

Windows 2000 professional or Windows XP professional or Windows Vista professional or Windows 7 professional

IE requirement

IE 6.0 or 8.0.

The newest version:

1. Mut-3 Gasoline vehicles (car) software version: V12.31-00

System Information	
M.U.T.-3 Version	PRG10121-00
Basic software	RK-1008-00
Diagnostic software	X5W-276-01
Viewer software	MC-1008-00
Diagnostic Database	X5W-276-01

2. FUSO Diesel vehicles (truck ,bus) software version: 2011-2.

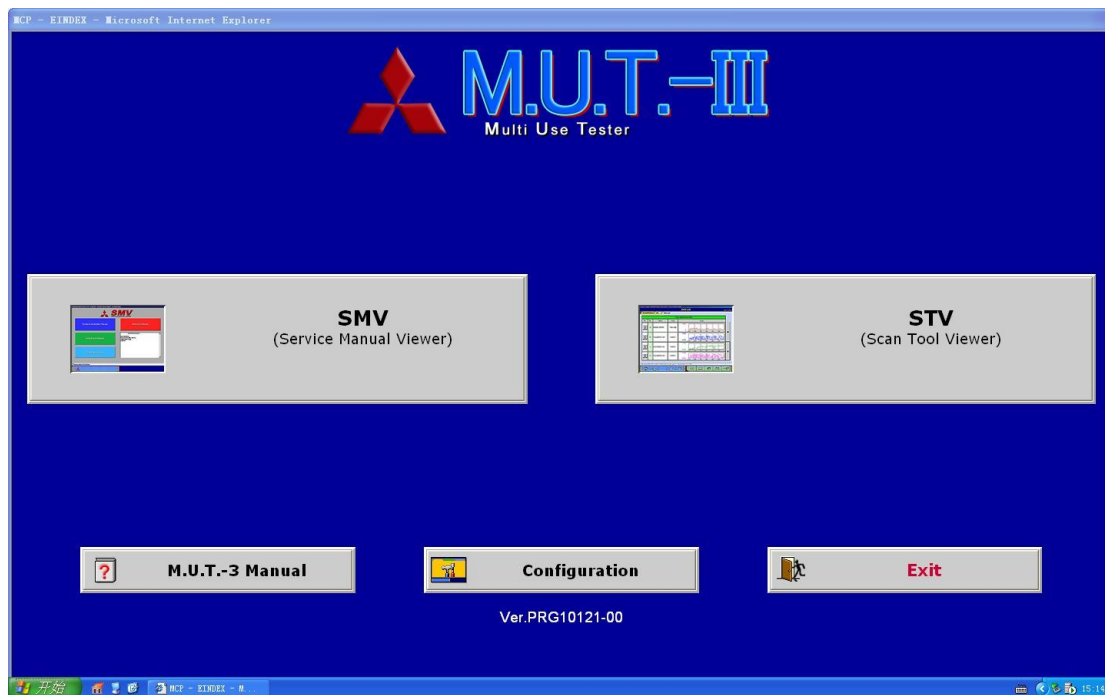


System Information			
System introduction date	12/21/2011		
Software version	FMS-E11-2		
Basic software	Type	RKTB-1102-00	Ver.1.11.02.04.0
Diagnostic software	Type	X5W-293-01	Ver.1.11.5.13.0
Viewer software	Type		Ver.
Diagnostic database version	Type	X5W-293-01	Ver.1.11.5.13.0

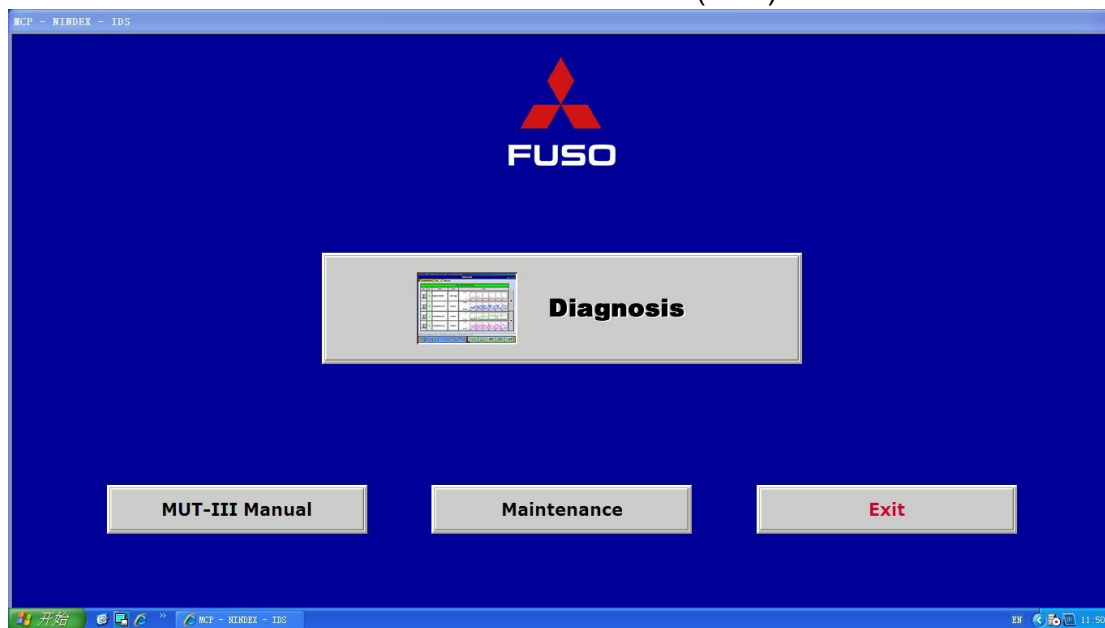
Now software is on DVD. You can install it on any computer, not necessary must on Dell D630.

Support Two Software :

Support **Mut-3 Gasoline vehicles (car)** and **FUSO Diesel vehicles (truck ,bus)**.



Mut-3 Gasoline vehicles (car)



FUSO Diesel vehicles (truck ,bus)

Description:

A personal computer (PC) is connected to the MUTIII unit and used as a system's control terminal, and communicates with a vehicle ECU through the VCI. In addition to being able to handle all diagnosis functions covered by the conventional MUT-II tester, the MUT-III system can display data as easy-to-understand diagrams and graphs on a large screen of the PC. Unlike the MUT-II, the MUT-III can retain data on all vehicles, from old to new models, classified according to destination in the PC's hard disk. This eliminates the awkward but essential job with the MUT-II, of switching the data list

(communications protocol data and diagnosis item list database) by replacing the ROM pack with another according to the vehicle model and year model.

Function:

New functions that make use of the advantages of the PC are also being developed. For example, the workshop manual viewer is a useful function for mechanics as they no longer have to carry around a thick manual and search for relevant pages while working on a vehicle. The workshop manual viewer is currently available for certain vehicle models, and allows users to retrieve the pages containing the failure code for a particular problem at the push of a button.

Specification:

1. Language including: [English](#), [Chinese](#), [French](#), [Spanish](#), [Thai](#), [Vietnamese](#), [Czech](#), [German](#), [Greek](#), [Italian](#), [Turkish](#), and [Russian](#).

2. Set Includes

(1) Vehicle Communication Interface (V.C.I.) (MB991824)

A communication interface used to connect the vehicle ECUs and the PC.



1) When connected with the PC

- Vehicle diagnosis (Interactive fault diagnosis)
- SWS communication; CAN communication support
- Drive recorder
- Volt, Ohm, measurement
- Fuel pressure measurement (Not available in US)



2) When used with the V.C.I. unit (disconnected from PC)

- V.C.I. Stand-alone diagnosis
- Drive recorder
- ECU reprogramming
- Volt, Ohm measurement
- Belt Tension measurement

(2) M.U.T. -III Main Harness A (MB991910)

Used when connecting the V.C.I. with vehicles that have only one 16-pin diagnosis connector.

- Supports fault diagnosis and ECU updating on the above-described vehicles
- Supports the CAN communication system



(3) M.U.T.-III Main Harness B (MB991911)

Used when connecting V.C.I. with vehicles that have a 16-pin + 12-pin or 16-pin + 13-pin diagnosis connector.

For models equipped with only 12-pin (or 12-pin + 12-pin) diagnosis connector,

connect the M.U.T.-II adapter harness (MB991498) to the end of this harness in the same as M.U.T.-II, and power is supplied from the cigarette lighter socket.



(4) M.U.T.-III BOX

